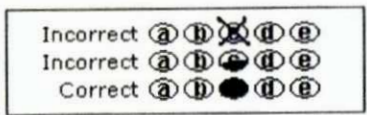


Name: _____
 Individual Certification/License or
 Registration #: _____
 Business Name: _____
 Business Certification/License or
 Registration #: _____
 Date: _____

SPS 13875 OSHA AWARENESS SERIES
LEAD IN CONSTRUCTION



This course has been approved for 17 Licenses/Certifications/Registrations which are administered by the Wisconsin Department of Safety and Professional Services.

- 1. (A) (B) (C) (D) 21. (A) (B) (C) (D)
- 2. (A) (B) (C) (D) 22. (A) (B) (C) (D)
- 3. (A) (B) (C) (D) 23. (A) (B) (C) (D)
- 4. (A) (B) (C) (D) 24. (A) (B) (C) (D)
- 5. (A) (B) (C) (D) 25. (A) (B) (C) (D)
- 6. (A) (B) (C) (D) 26. (A) (B) (C) (D)
- 7. (A) (B) (C) (D) 27. (A) (B) (C) (D)
- 8. (A) (B) (C) (D) 28. (A) (B) (C) (D)
- 9. (A) (B) (C) (D) 29. (A) (B) (C) (D)
- 10. (A) (B) (C) (D) 30. (A) (B) (C) (D)
- 11. (A) (B) (C) (D) 31. (A) (B) (C) (D)
- 12. (A) (B) (C) (D) 32. (A) (B) (C) (D)
- 13. (A) (B) (C) (D) 33. (A) (B) (C) (D)
- 14. (A) (B) (C) (D) 34. (A) (B) (C) (D)
- 15. (A) (B) (C) (D) 35. (A) (B) (C) (D)
- 16. (A) (B) (C) (D) 36. (A) (B) (C) (D)
- 17. (A) (B) (C) (D) 37. (A) (B) (C) (D)
- 18. (A) (B) (C) (D) 38. (A) (B) (C) (D)
- 19. (A) (B) (C) (D) 39. (A) (B) (C) (D)
- 20. (A) (B) (C) (D) 40. (A) (B) (C) (D)

<i>Automatic Fire Sprinkler Contractors License</i>	<i>Journeyman Plumber License</i>
<i>Automatic Fire Sprinkler Contractor-Maintenance Registration</i>	<i>Master Electrician License</i>
<i>Boiler-Pressure Vessel Inspector Certification</i>	<i>Master Plumber License</i>
<i>Commercial Electrical Inspector Certification</i>	<i>Registered Electrician Registration</i>
<i>Commercial Plumbing Inspector Certification</i>	<i>Residential Journeyman Electrician License</i>
<i>Dwelling Contractor Qualifier Certification</i>	<i>Residential Master Electrician License</i>
<i>Industrial Journeyman Electrician License</i>	<i>UDC-HVAC Inspector Certification</i>
<i>Journeyman Automatic Fire Sprinkler Fitter License</i>	<i>UDC-Plumbing Inspector Certification</i>
<i>Journeyman Electrician License</i>	

Kevin Wunderlin LLC
 PO Box 268
 Platteville, Wisconsin 53818
www.uscontractorlicense.com
 608-348-6688

Course 13875
LEAD IN CONSTRUCTION
 4 Hours of Continuing Education

**This Course has been approved by the Wisconsin Department
of Safety and Professional Services for the following
Certifications, Registrations or License.**

Effective October 15, 2010 you may not retake the same training session for credit more than once during the 1, 2 or 4 year term of a specific credential. You may take the same course in a different education cycle.

KEVIN WUNDERLIN LLC
PO BOX 268
PLATTEVILLE, WI 53818

Course: 13875 OSHA AWARENESS SERIES - LEAD IN CONSTRUCTION

This course is valid for these credentials:

Credential Description	Cred Code	Credit Hours
Automatic Fire Sprinkler Contractor	AFSC	4.0
Automatic Fire Sprinkler Fitter-Maintenance	AFSFM	4.0
Boiler-Pressure Vessel Inspector	BPVI	4.0
Commercial Electrical Inspector	CEI	4.0
Commercial Plumbing Inspector	CPI	4.0
Dwelling Contractor Qualifier	DCQ	4.0
Industrial Journeyman Electrician	IJE	4.0
Journeyman Automatic Fire Sprinkler Fitter	JAFSF	4.0
Journeyman Electrician	JE	4.0
Journeyman Plumber	PJ	4.0
Master Electrician	ME	4.0
Master Plumber	PM	4.0
Registered Electrician	BE	4.0
Residential Journeyman Electrician	RJE	4.0
Residential Master Electrician	RME	4.0
UDC-HVAC Inspector	UHI	4.0
UDC-Plumbing Inspector	UPI	4.0